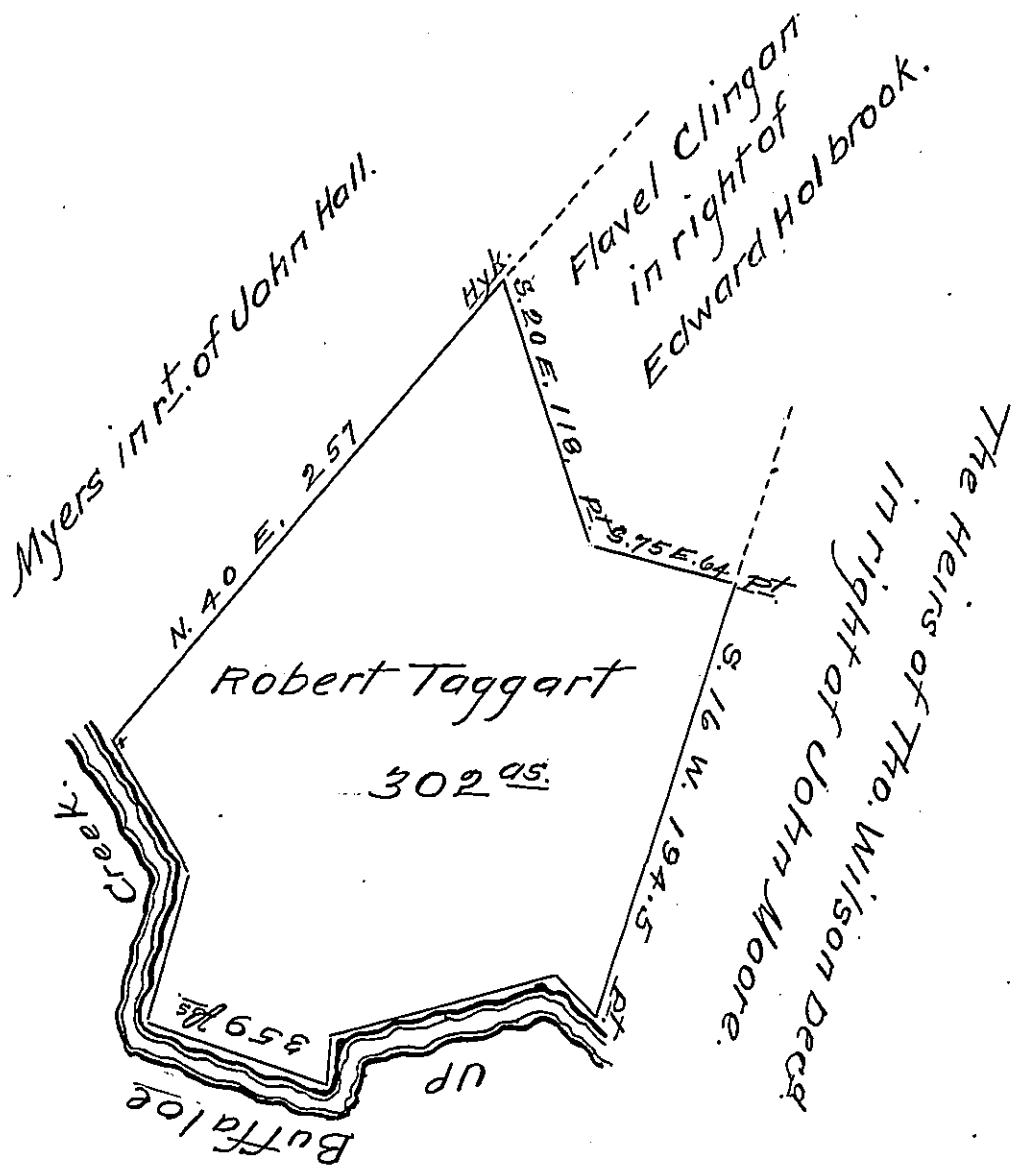


Cor. & Dist. up
Buffaloe Creek.

N. 49	W. 25.
S. 76	W. 100.
S. 6	W. 20.
N. 71	W. 83.
N. 16	E. 65.
N. 32	W. 66.
<hr/>	
359.	



Situate in Kelly township Union late (Berks) County surveyed the 5th day of May 1832 by virtue of an order granted to Robert Taggart dated the 3^d day of April 1769 No 2340 Containing three hundred & two acres with the usual allowance of six Per Ct &c.

The same tract of land was surveyed the 12th day of August 1769 for Richard Edwards in pursuance of his order dated the 3^d day of April 1769 No 714 - Now owned & possessed by Roan McClure in right of the said Richard Edwards

Pr. Jno. Hayes, Con.

To Jacob Spangler Esq. }
Surveyor General }

IN TESTIMONY that the above is a copy of the original remaining on file in the Department of Internal Affairs of Pennsylvania, made conformably to an Act of Assembly approved the 16th day of February, 1833, I have hereunto set my Hand and caused the Seal of said Department to be affixed at Harrisburg, this twenty sixth day of August 1908.

Henry Horch
Secretary of Internal Affairs.